



Vaccines For The Ages

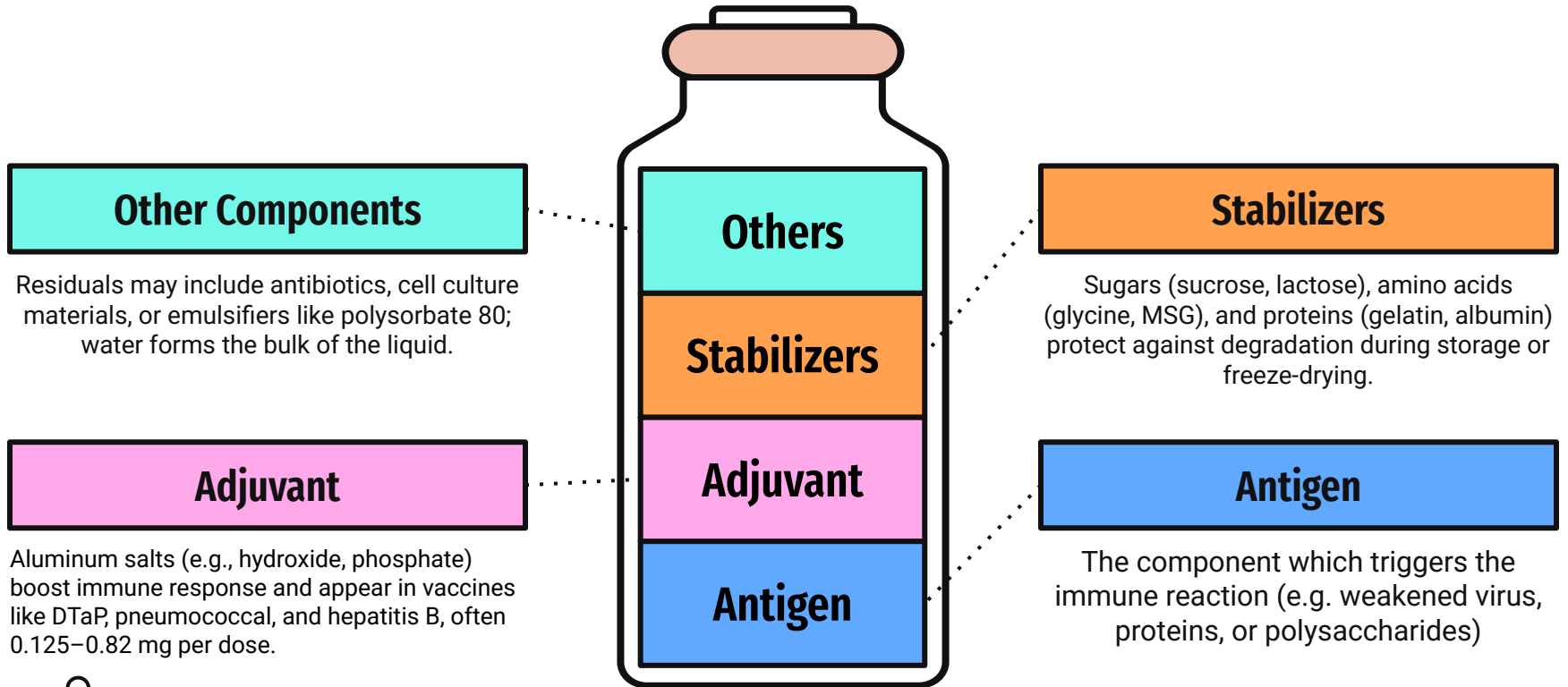
Immunization Updates for 60+ Patients

Dr. Andrew JP Carroll, MD FAAFP
Arizona Medical Director, VaxCare

Financial Disclosures

- Dr. Andrew Carroll, faculty for this CE activity, is a consultant with Vaxcare, these topics will not be talked about in this presentation. All of the relevant financial relationships have been mitigated.
- None of the planners for this activity have relevant financial relationships to disclose with ineligible companies.
- The Arizona Alliance for Community Health Centers is accredited by the Arizona Medical Association to provide medical education for physicians.
- The Arizona Alliance for Community Health Centers designated the 2026 Arizona Immunization Conference educational activity for a maximum of 11 hours AMA PRA Category 1 Credits Physicians should only claim credit commensurate with the extent of their participation in the activity.
- The Arizona Pharmacy Association is accredited by the Accreditation Council for Pharmacy Education (ACPE) as a provider of continuing pharmacy education.

Vaccination Common Components (single dose)



Shingles Vaccine (Shingrix, GSK)

Shingrix Vaccination Record Card

Name

John

Surname

Smith

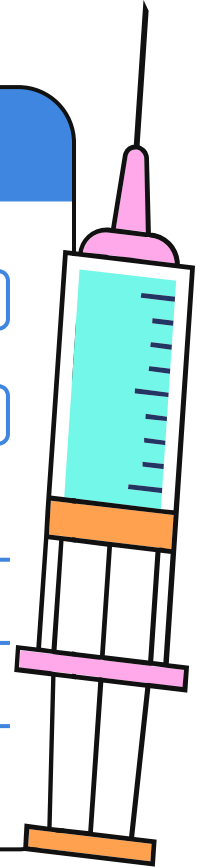
Date of birth

04 / 14 / 1976

Insurance number

9-029847562 K

Vaccine	Manufacturer	Date	Clinic
1 st dose	GSK	12/14/25	Generic Hospital
2 nd dose	GSK	2/14/26	Generic Pharmacy
Other	97% effective after 2nd dose		Side effects are common



Pneumonia Vaccines

PPV23, Merck



PPV23, also known as PPSV23 or Pneumovax 23, is the 23-valent pneumococcal polysaccharide vaccine. It protects against 23 serotypes of *Streptococcus pneumoniae* bacteria

Boosted

Prenar 20, Pfizer



Prenar 20 is a 20-valent pneumococcal conjugate vaccine (PCV20) manufactured by Pfizer. It protects against 20 serotypes

Unboosted

Capvaxive 21, Merck



It targets serotypes causing about 82-85% of IPD cases in U.S. adults ≥ 65 years, including 8 unique ones not in PCV20 or PPSV23

Phase 3 Trials

VAX-31, Vax-24



In Development, both entering Phase 3 clinical trials

Influenza Vaccines



Egg Culture

Fluzone (Sanofi)
Afluria (Seqirus)
Fluarix (GSK)
Flulaval (GSK, Quebec)



Cell-based culture

Flucelvax (Seqirus)



Recombinant vaccine

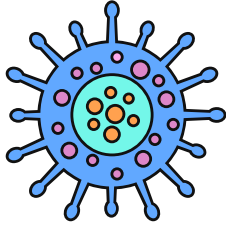
Flublok (Sanofi)



Senior Vaccines (65+)

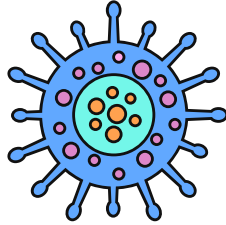
Fluzone HD (Sanofi)
Fluad (Seqirus)

Covid Vaccines



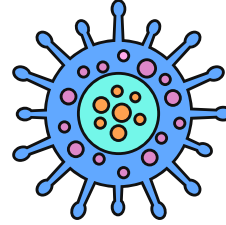
**Spikevax
(Moderna)**

mRNA vaccine approved for anyone ages 6 months and older.



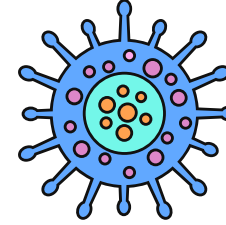
**mNexSpike
(Moderna)**

mRNA vaccine approved for ages 12 years and older, particularly those at higher risk.



**Comirnaty
(Pfizer)**

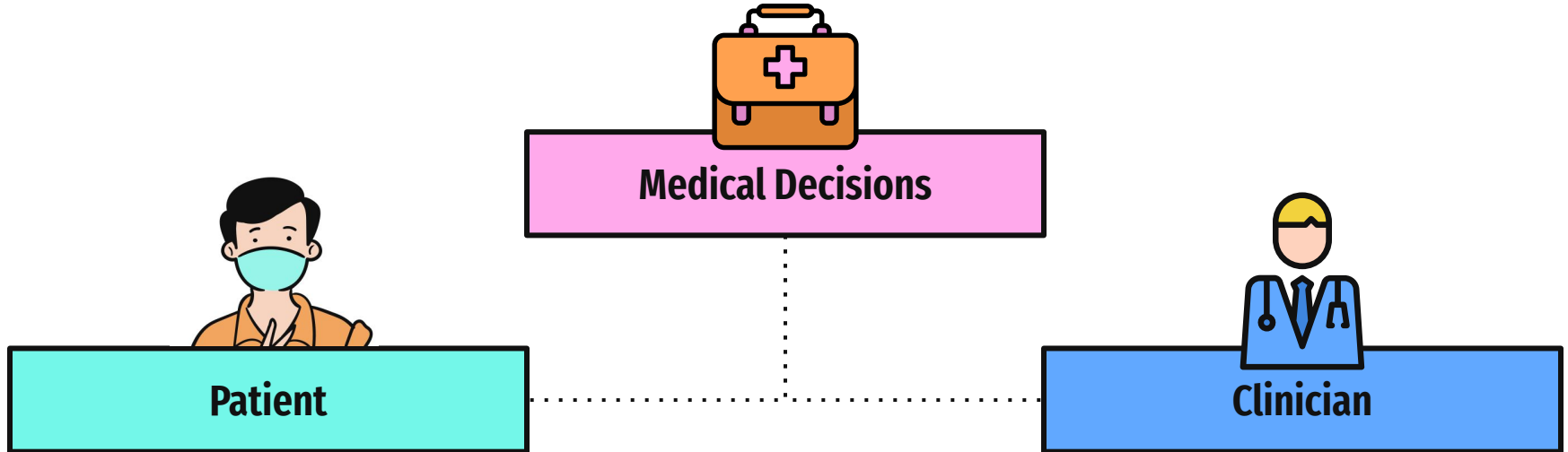
mRNA vaccine approved for anyone ages 5 years and older; LP.8.1-adapted formula.



**Nuvaxovid
(Novavax)**

Protein-based, non-mRNA vaccine approved for ages 12 years and older, especially high-risk individuals 65+ or with underlying conditions.

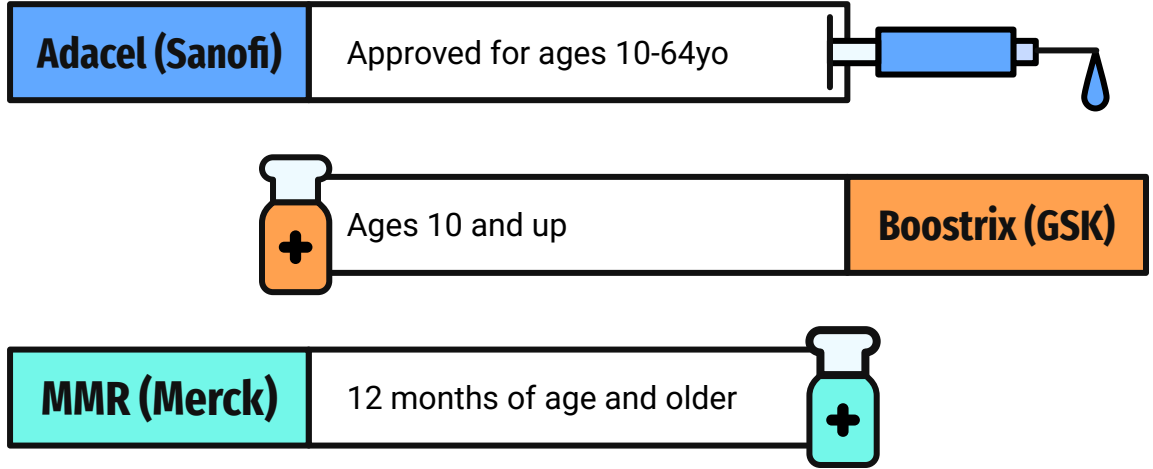
Shared Decision Making



Patients actively participate by expressing concerns and priorities, while providers tailor information to individual needs.

It requires clear communication of evidence-based options, including risks, benefits, and alternatives like no intervention.

Tdap and MMR



mPox and RSV (75+, or 60-74 high risk)



JYNNEOS

For mPox, in high risk groups



Arexvy

Recombinant RSV fusion, adjuvanted



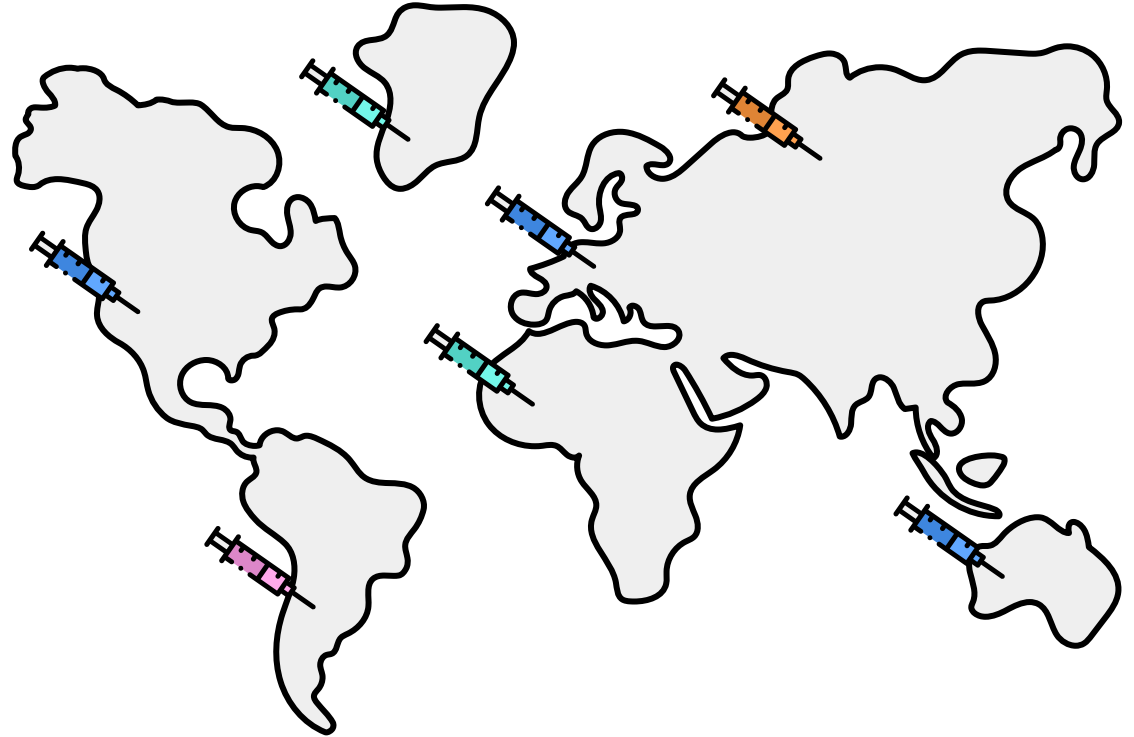
Abrysvo

Bivalent prefusion F protein



mResvia

mRNA prefusion F Protein



Real World Efficacy

Feature	Arexvy (GSK)	Abrysvo (Pfizer)	mResvia (Moderna)
Type	Recombinant preF + AS01E	Bivalent preF protein	mRNA preF
Approval Age	50+ at risk	18+ at risk	50+ / 18-49 high-risk
VE Hospitalization (Real-World)	83%	73%	63-83% (8 mo)
Common Side Effects	Pain, fatigue, headache (mild-moderate)	Similar, slightly higher fatigue	Injection pain highest, transient
Duration Studied	Up to 24 months	18 months	8-12 months

Travel Vaccines

Typhoid

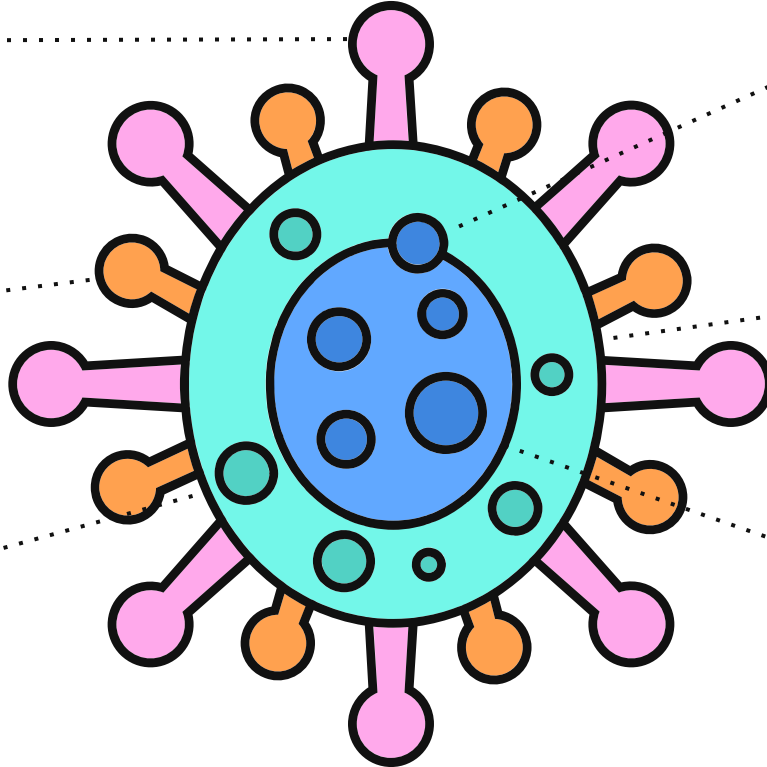
Water-borne illness, booster every 5 years for Vivotif Berna. Typhim every 2 years.

Yellow Fever

High risk in those over 60, only use in high-risk individuals

Hepatitis A

High risk areas, water-borne illness. 2 doses 6 months apart, or Twinrix.



Hepatitis B

Only in high-risk individuals (blood or body fluid contact)

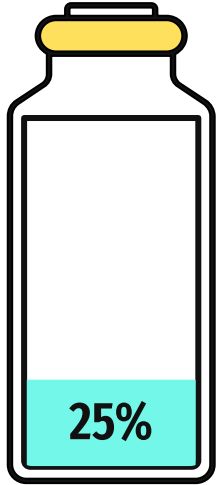
Rabies

High risk (working with animals), two doses > 7 days apart

Japanese Encephalitis

Endemic areas only, 2 dose schedule 28 days apart

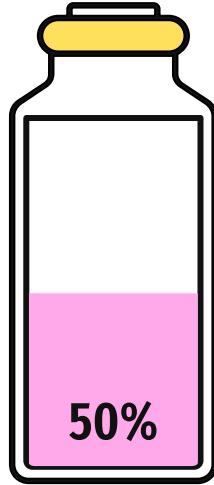
CDC Pneumonia Vaccine Changes



25%

50+

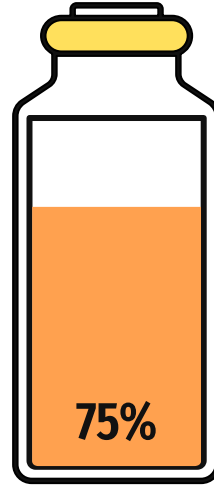
Pneumonia Vaccine now recommend starting at age 50



50%

Pneumovax 23

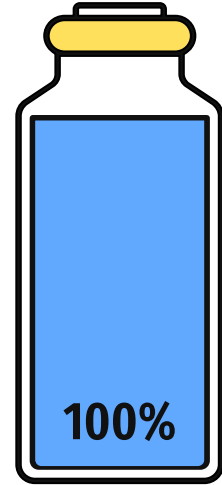
Okay to give, but usually boosted



75%

PCV-15

Used with PPV23 to provide adequate immunizations

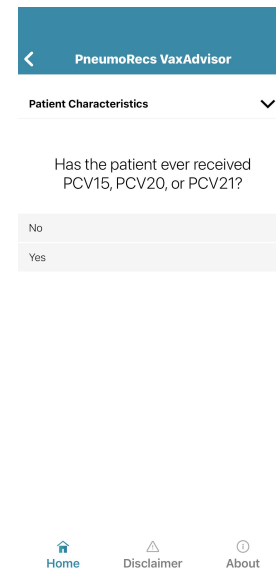
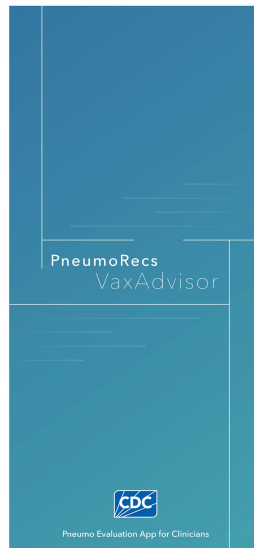
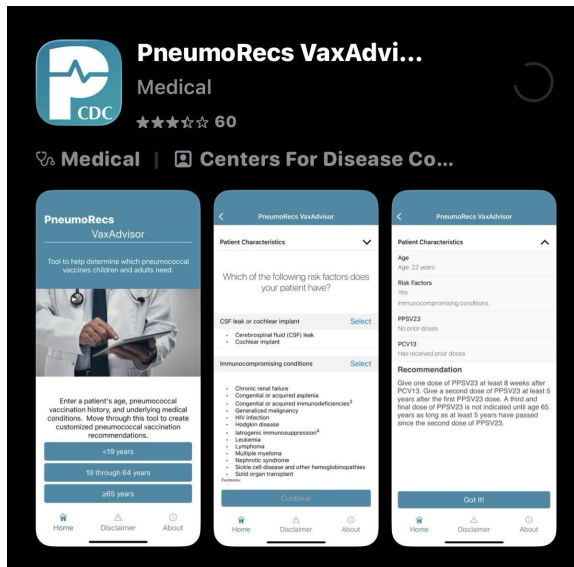


100%

PCV20 or PCV21

Given as a single vaccine—no booster and no PPV23 necessary

New CDC Recommendation App for Pneumonia



<https://www.cdc.gov/pneumococcal/hcp/vaccine-recommendations/app.html>

Sources for Vaccine Recommendations

1

CDC:

<https://www.cdc.gov/vaccines/hcp/imz-schedules/adult-age.html>

2

AAFP

<https://www.aafp.org/family-physician/patient-care/prevention-wellness/immunizations-vaccines/immunization-schedules/adult-immunization-schedule.html>

4

Finally, speak with your clinician about these recommendations and what's best for you

3

WHO:

<https://www.who.int/publications/m/item/table1-summary-of-who-position-papers-recommendations-for-routine-immunization>



Questions?



Name

Samantha

Surname

McGregor

Date of birth

10 / 11 / 1975

Insurance number

9-029847562 K



Hospital

Mesa Convention Center

City, Country

Mesa, Arizona, USA

Date of Vaccination

10 / 06 / 2021

Vaccine

UltraSonica

Continuing Education

If you would like to claim CE Credits:

**A QR Code will be displayed in
the MAIN HALL
at the end of the day**

The following CE credits are available:

CMEs for Physicians (Doctors, NPs, PAs)

CE Contact Hours for Nurses (RNs, LPNs)

CMEs for Medical Assistants

Certified Health Education Specialists CE
(CHES)

Social Worker CE (National Association of
Social Workers)

Pharmacy Continuing Education

